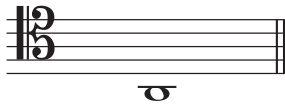


## 2 Pitch

/10

2.1 Tick (✓) **one** box to show the name of this note.

(1)



F

B

G

A

2.2 Tick (✓) **one** box to show the correct enharmonic equivalent of this note.

(1)



2.3 Here is a bar at sounding pitch for the cor anglais.

(5)



This bar has been transposed up a perfect 5th to be at written pitch. There are some mistakes. Put a tick (✓) **or** cross (X) underneath the key signature and each note to show whether each is correct **or** incorrect.



2.4 Compare bars **A**, **B** and **C**, then circle **TRUE** or **FALSE** for each of the **three** statements.

(3)



(a) **A** and **C** are at the same pitch

**TRUE**      **FALSE**

(b) **A** is one octave higher than **B**

**TRUE**      **FALSE**

(c) **B** is one octave lower than **C**

**TRUE**      **FALSE**